

ELIT

Fold clamp galvanized steel Ø8-10mm

Multi-plus galvanized steel clamp for Ø8-10mm conductor

Technical description

Multi-clamp / connection terminal, made of stainless steel, according to EN 62561-1 with intermediate plate for universal use as T-, cross-, parallel terminal, splice connector and sheet metal terminal for round conductors Ø8 - 10 mm.

Clamping range: up to 8 mm

Contact area: at least 10 cm²

Screw: M10 locking bolt with nut

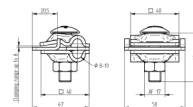
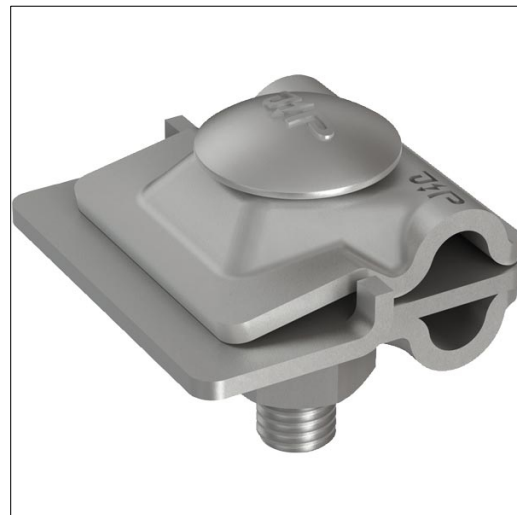
Advantages:

Only one clamp for all types of wire connections

Maximum contact thanks to even clamping

Extremely short installation time - only one M10 screw

Optimal handling during planning, procurement and storage



Product name/ Art.nr/ GTIN	ELIT FALS-KLEM-GALV-Ø810MM/ 40180037/ 7070810039074
According to:	EN 62561-1
Type of connector	Rebate clamp
Suitable for diameter round conductor	8 - 10 Millimetre
Clamping range	0 - 8 Millimetre
Material	Steel
Surface protection	Hot-dip galvanized
Type of fastening screws	Flat round screw